

# Abbey Primary School

## Phonics Report

2017

*Sample  
Pages*



Report produced on 27/6/2017

# Contents

Key to pupil group abbreviations

DA	Disadvantaged
NDA	Not Disadvantaged
SENWS	SEN (with statement/EHC)
SENNS	SEN (without statement/EHC)
NSEN	Non-SEN

## Phonics Summaries

Phonics Summary: 2017	1
Phonics Summary: 2016	2
Phonics Summary: 2015	3

Included in this sample report

## All schools tables

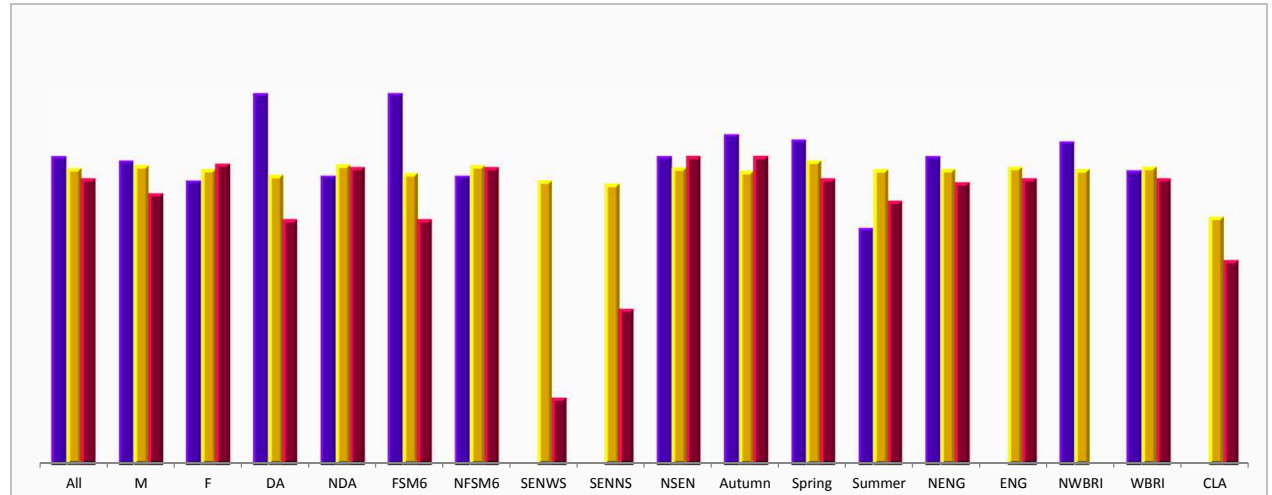
	All	Boys	Girls	DA	NDA	SENWS	SENNS	NSEN	Autumn	Spring	Summer
Phonics	A1	A2	A3	A4	A5	A6	A7	A8	A9	A10	A11

# Abbey Primary School

## Phonics: 2017

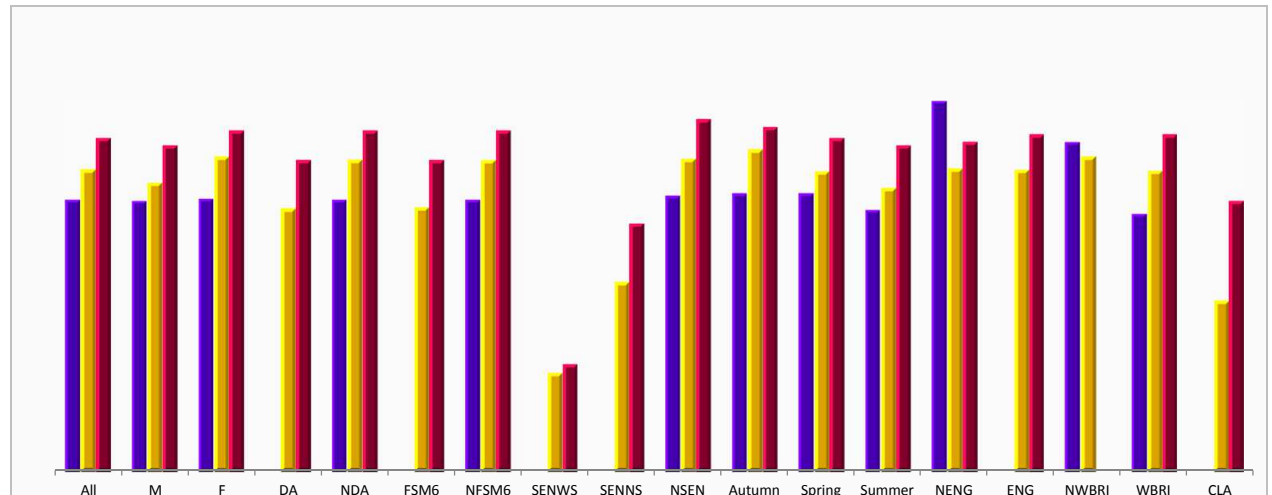
### Year 1: 2017

	Chart Code	Sch			LA		Nat	
		No.	Mark	%	Mark	%	Mark	%
All pupils	All	47	35.2	83%	33.7	80%	-	77%
Boys	M	11	34.8	82%	34.1	81%	-	73%
Girls	F	17	33.6	76%	33.5	80%	-	81%
Disadvantaged	DA	1	36.0	100%	33.7	78%	-	66%
Not Disadvantaged	NDA	27	34.0	78%	33.9	81%	-	80%
FSM6	FSM6	1	36.0	100%	33.8	78%	-	66%
Non-FSM6	NFSM6	27	34.0	78%	33.8	81%	-	80%
SEN (with statement/EHC)	SENWS	-	-	-	33.4	76%	-	18%
SEN (without statement/EHC)	SENNs	-	-	-	32.7	76%	-	42%
Non-SEN	NSEN	47	35.2	83%	33.8	80%	-	83%
Autumn Birth	Autumn	9	35.4	89%	33.9	79%	-	83%
Spring Birth	Spring	8	35.6	88%	34.1	82%	-	77%
Summer Birth	Summer	11	31.8	64%	33.5	79%	-	71%
First Language - Other	NENG	47	35.2	83%	33.7	80%	-	76%
First Language - English	ENG	-	-	-	33.8	80%	-	77%
Ethnicity - non-White British	NWBRI	23	33.7	87%	33.7	79%	-	-
Ethnicity - White British	WBRI	24	34.8	79%	33.8	80%	-	77%
Looked After	CLA	-	-	-	33.0	67%	-	55%



### Year 2: 2017

	Chart Code	Sch			LA		Nat	
		No.	Mark	%	Mark	%	Mark	%
All pupils	All	45	32.4	73%	33.8	82%	30.0	90%
Boys	M	26	32.9	73%	32.9	78%	30.0	88%
Girls	F	19	31.6	74%	34.6	85%	30.0	92%
Disadvantaged	DA	-	-	-	31.4	71%	30.0	84%
Not Disadvantaged	NDA	45	32.4	73%	34.4	84%	30.0	92%
FSM6	FSM6	-	-	-	31.5	71%	30.0	84%
Non-FSM6	NFSM6	45	32.4	73%	34.3	84%	30.0	92%
SEN (with statement/EHC)	SENWS	-	-	-	15.9	27%	30.0	29%
SEN (without statement/EHC)	SENNs	-	-	-	25.7	51%	30.0	67%
Non-SEN	NSEN	43	32.7	74%	34.6	84%	30.0	95%
Autumn Birth	Autumn	16	32.6	75%	35.0	87%	30.0	93%
Spring Birth	Spring	12	31.7	75%	33.7	81%	30.0	90%
Summer Birth	Summer	17	32.6	71%	32.6	77%	30.0	88%
First Language - Other	NENG	1	40.0	100%	34.4	82%	30.0	89%
First Language - English	ENG	-	-	-	33.7	82%	30.0	91%
Ethnicity - non-White British	NWBRI	9	36.1	89%	34.6	85%	30.0	-
Ethnicity - White British	WBRI	36	31.4	69%	33.7	81%	30.0	91%
Looked After	CLA	-	-	-	25.4	46%	30.0	73%

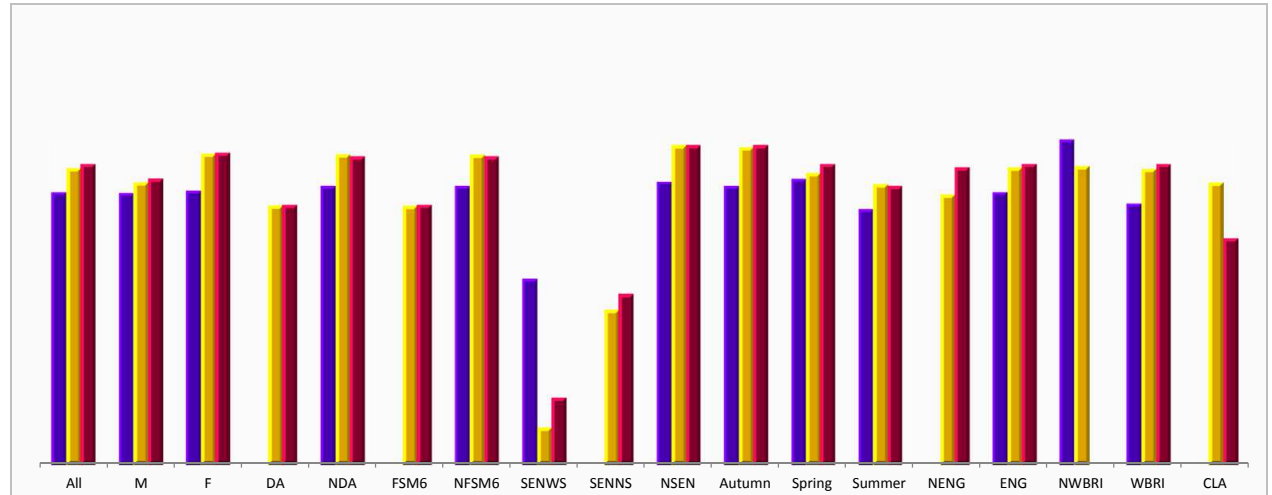


# Abbey Primary School

## Phonics: 2016

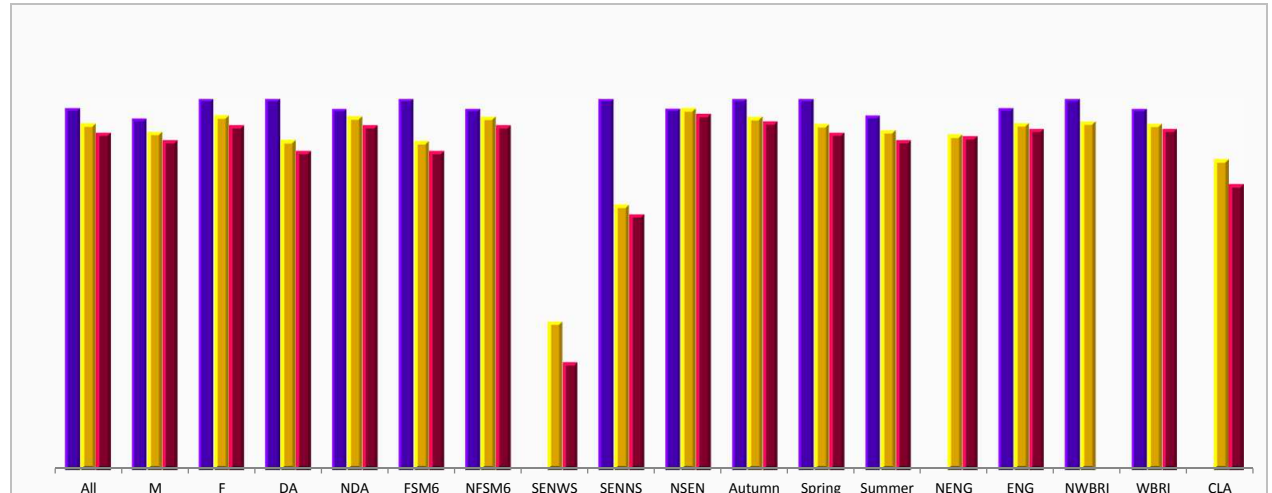
### Year 1: 2016

	Chart Code	Sch			LA		Nat	
		No.	Mark	%	Mark	%	Mark	%
All pupils	All	45	32.4	73%	33.7	80%	34.0	81%
Boys	M	26	32.9	73%	32.9	76%	33.0	77%
Girls	F	19	31.6	74%	34.5	84%	35.0	84%
Disadvantaged	DA	1	19.0	-	31.6	70%	31.0	70%
Not Disadvantaged	NDA	44	32.7	75%	34.5	84%	35.0	83%
FSM6	FSM6	1	19.0	-	31.6	70%	31.0	70%
Non-FSM6	NFSM6	44	32.7	75%	34.4	83%	35.0	83%
SEN (with statement/EHC)	SENWS	2	25.5	50%	15.2	10%	19.0	18%
SEN (without statement/EHC)	SENNS	1	19.0	-	24.0	42%	25.0	46%
Non-SEN	NSEN	42	33.0	76%	35.1	86%	35.0	86%
Autumn Birth	Autumn	16	32.6	75%	34.9	85%	35.0	86%
Spring Birth	Spring	13	32.2	77%	33.6	79%	34.0	81%
Summer Birth	Summer	16	32.3	69%	32.6	76%	33.0	75%
First Language - Other	NENG	-	-	-	32.3	73%	34.0	80%
First Language - English	ENG	45	32.4	73%	33.7	80%	34.0	81%
Ethnicity - non-White British	NWBRI	8	34.8	88%	33.8	80%	-	-
Ethnicity - White British	WBRI	37	31.8	70%	33.7	80%	34.0	81%
Looked After	CLA	-	-	-	31.6	76%	30.0	61%



### Year 2: 2016

	Chart Code	Sch			LA		Nat	
		No.	Mark	%	Mark	%	Mark	%
All pupils	All	40	36.3	97%	35.7	93%	36.1	91%
Boys	M	20	36.5	95%	35.4	91%	36.1	89%
Girls	F	20	36.1	100%	36.1	96%	36.1	93%
Disadvantaged	DA	2	36.0	100%	34.6	89%	36.1	86%
Not Disadvantaged	NDA	38	36.3	97%	36.2	95%	36.1	93%
FSM6	FSM6	2	36.0	100%	34.6	89%	36.1	86%
Non-FSM6	NFSM6	38	36.3	97%	36.2	95%	36.1	93%
SEN (with statement/EHC)	SENWS	1	-	-	22.0	40%	29.0	29%
SEN (without statement/EHC)	SENNS	1	35.0	100%	31.6	72%	36.1	69%
Non-SEN	NSEN	38	36.3	97%	36.5	98%	36.1	96%
Autumn Birth	Autumn	8	36.6	100%	36.3	95%	36.1	94%
Spring Birth	Spring	10	36.5	100%	35.5	93%	36.1	91%
Summer Birth	Summer	22	36.1	95%	35.3	92%	36.1	89%
First Language - Other	NENG	-	-	-	35.1	90%	36.1	90%
First Language - English	ENG	40	36.3	97%	35.8	94%	36.1	92%
Ethnicity - non-White British	NWBRI	2	37.5	100%	35.9	94%	-	-
Ethnicity - White British	WBRI	38	36.2	97%	35.7	93%	36.1	92%
Looked After	CLA	-	-	-	32.4	84%	36.1	77%

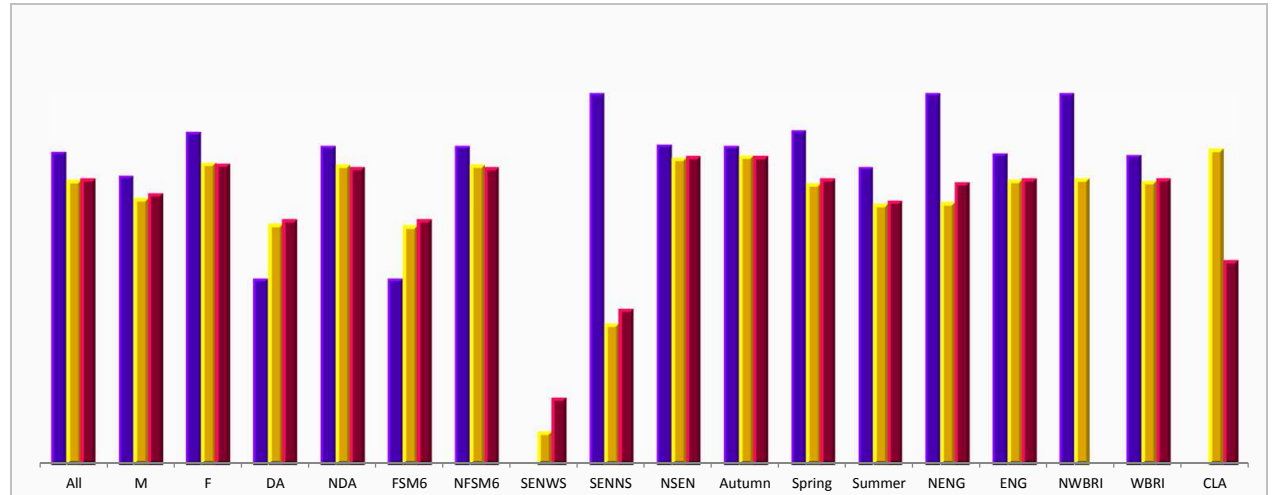


# Abbey Primary School

## Phonics: 2015

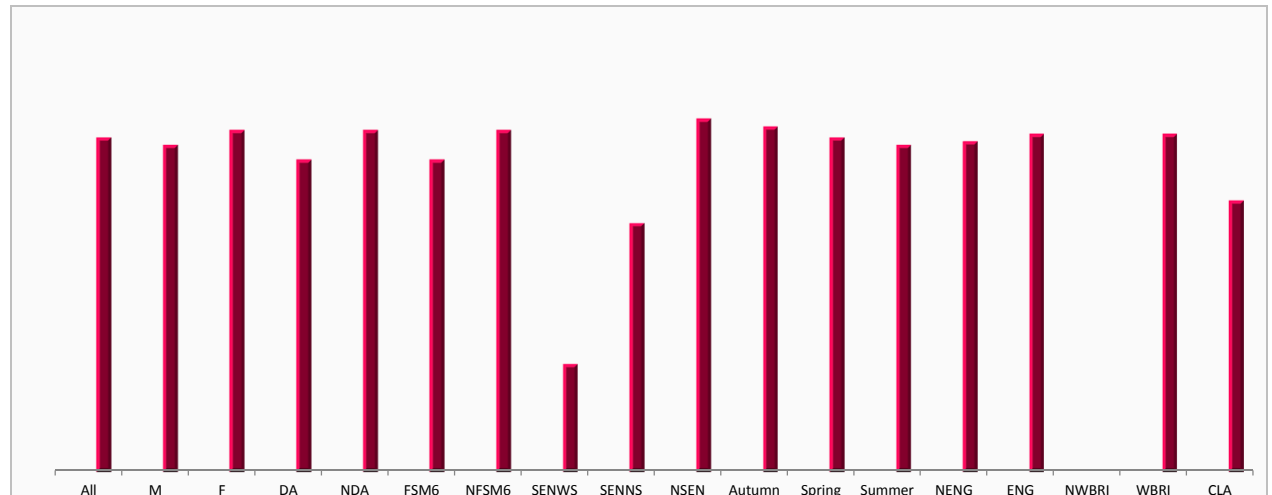
### Year 1: 2015

	Chart Code	Sch			LA		Nat	
		No.	Mark	%	Mark	%	Mark	%
All pupils	All	38	35.5	84%	33.3	77%	-	77%
Boys	M	18	35.4	78%	32.4	72%	-	73%
Girls	F	19	35.6	89%	34.2	81%	-	81%
Disadvantaged	DA	2	30.5	50%	30.9	65%	-	66%
Not Disadvantaged	NDA	35	35.8	86%	34.2	81%	-	80%
FSM6	FSM6	2	30.5	50%	30.8	64%	-	66%
Non-FSM6	NFSM6	35	35.8	86%	34.2	81%	-	80%
SEN (with statement/EHC)	SENWS	1	-	-	16.3	9%	-	18%
SEN (without statement/EHC)	SENNS	1	35.0	100%	24.5	38%	-	42%
Non-SEN	NSEN	36	35.5	86%	34.5	83%	-	83%
Autumn Birth	Autumn	7	36.8	86%	34.6	83%	-	83%
Spring Birth	Spring	10	36.1	90%	33.1	76%	-	77%
Summer Birth	Summer	20	34.9	80%	32.1	70%	-	71%
First Language - Other	NENG	1	35.0	100%	31.8	71%	-	76%
First Language - English	ENG	37	35.5	84%	33.3	77%	-	77%
Ethnicity - non-White British	NWBRI	2	37.5	100%	33.4	77%	-	-
Ethnicity - White British	WBRI	36	35.4	83%	33.3	76%	-	77%
Looked After	CLA	-	-	-	35.3	85%	-	55%



### Year 2: 2015

	Chart Code	Sch			LA		Nat
		No.	Mark	%	Mark	%	%
All pupils	All	-	-	-	-	-	90%
Boys	M	-	-	-	-	-	88%
Girls	F	-	-	-	-	-	92%
Disadvantaged	DA	-	-	-	-	-	84%
Not Disadvantaged	NDA	-	-	-	-	-	92%
FSM6	FSM6	-	-	-	-	-	84%
Non-FSM6	NFSM6	-	-	-	-	-	92%
SEN (with statement/EHC)	SENWS	-	-	-	-	-	29%
SEN (without statement/EHC)	SENNS	-	-	-	-	-	67%
Non-SEN	NSEN	-	-	-	-	-	95%
Autumn Birth	Autumn	-	-	-	-	-	93%
Spring Birth	Spring	-	-	-	-	-	90%
Summer Birth	Summer	-	-	-	-	-	88%
First Language - Other	NENG	-	-	-	-	-	89%
First Language - English	ENG	-	-	-	-	-	91%
Ethnicity - non-White British	NWBRI	-	-	-	-	-	-
Ethnicity - White British	WBRI	-	-	-	-	-	91%
Looked After	CLA	-	-	-	-	-	73%



# ALL SCHOOLS

## Phonics: 2017

### All pupils

To include a school in a shorter list, click on its name then press

'Filter Schools'

To sort by a column click on the column heading

Filter Schools	Reset list	Y1 NOP	Y1 Mark	Y1 Result	Y2 NOP	Y2 Mark	Y2 Result
National			0.0	77%			90%
LA		3081	33.7	80%	3721	33.8	82%
Abbey Primary School		47	35.2	83%	45	32.4	73%
Acorn Primary School		39	32.0	74%	58	31.1	76%
All Saints CoFE Primary School		45	34.1	84%	59	33.1	80%
Alvanley Park Primary School		30	30.0	70%	42	35.3	85%
Balliol Primary School		41	31.5	63%	48	37.7	98%
Benwick Primary School		28	31.2	71%	30	34.3	80%
Bewley Drive Infant School		49	35.7	90%	45	32.4	69%
Bigdale Drive Infant School		51	35.1	86%	59	33.8	84%
Blackfriars Primary School		24	31.8	71%	27	36.2	85%
Brasenose Primary School		23	35.0	87%	30	33.2	80%
Brindley Primary School		17	31.0	71%	22	30.7	71%
Buckstone Primary School		24	33.8	83%	30	34.9	87%
Bullens Primary School		45	33.1	78%	60	34.0	76%
Carfax Primary School		39	35.3	85%	45	34.4	86%
Catte Street School		56	33.0	73%	83	33.9	82%
Cavendish Primary School		23	34.1	78%	29	32.8	79%
Cherryfield Primary School		47	34.1	83%	53	30.7	68%
Cophorne Primary School		29	34.1	79%	38	30.7	68%
County Road Primary School		22	35.3	86%	30	36.1	93%
Delaware Vale Infant School		49	33.9	84%	58	34.9	88%
Eastfield Primary School		53	34.5	77%	60	35.6	81%
Falcon Primary School		39	33.4	82%	45	36.1	84%
Forest Hill Primary School		36	32.1	72%	50	28.0	49%
Highfield Primary School		28	35.2	86%	27	31.2	69%
Holy Family Catholic Primary School		38	34.4	79%	36	36.7	91%
Holywell Primary School		47	35.0	81%	49	36.0	88%
Houlston Road Primary School		19	36.6	89%	22	33.0	77%
Iffley Road Primary School		15	32.3	73%	23	31.0	71%
James Holt Primary School		25	35.7	84%	28	33.2	86%
Jubilee Primary School		28	37.1	100%	40	33.4	85%
Kennelwood Primary School		23	32.8	83%	29	34.0	86%
Kingfisher Primary School		17	34.0	82%	9	33.9	71%
Ledsham Vale Primary School		37	30.9	68%	40	33.9	85%
Longwall Street Primary School		17	33.6	82%	20	34.6	79%
Magdalen Primary School		49	34.8	78%	47	32.7	77%
Marbury Road Primary School		73	32.9	81%	90	37.3	94%
Melverley Primary School		15	35.8	80%	19	28.1	53%
Mercer Primary School		20	30.1	70%	26	32.2	81%
Merton Primary School		45	31.5	71%	59	34.8	85%
Mill Lane Primary School		21	31.2	71%	16	34.3	88%
New College Lane Primary School		43	34.3	84%	52	32.6	74%
Northwood Primary School		40	34.4	85%	50	36.5	96%
Oatlands Road Primary School		62	34.6	84%	86	35.2	90%
Old Hall Primary School		47	33.4	83%	58	31.7	73%
Our Lady Immaculate Catholic Primary School		55	32.5	75%	60	35.9	92%

# ALL SCHOOLS

## Phonics: 2017

### All pupils

To include a school in a shorter list, click on its name then press

'Filter Schools'

To sort by a column click on the column heading

Filter Schools	Reset list	Y1 NOP	Y1 Mark	Y1 Result	Y2 NOP	Y2 Mark	Y2 Result
Our Lady of Lourdes RC Infant School		71	31.6	72%	88	33.4	85%
Our Lady of Perpetual Succour Catholic Primary School		28	35.1	82%	37	33.6	88%
Peplow Road Primary School		50	34.2	82%	60	33.7	81%
Queen's Lane Primary School		22	34.4	77%	30	35.1	83%
Radcliffe Primary School		21	32.0	67%	20	30.0	75%
Richard Hesketh Primary School		48	32.3	81%	59	33.6	84%
Roughwood Primary School		47	34.9	83%	58	30.1	73%
Shevingtons Lane Primary School		46	35.1	89%	60	33.9	82%
Southdene Primary School		28	33.3	79%	23	30.5	65%
St Bartholomew's CofE Primary School		37	34.0	86%	49	31.8	76%
St Bede's Catholic Primary School		45	34.5	87%	52	34.7	81%
St Bernadette's Catholic Primary School		37	34.8	81%	45	35.5	84%
St Catherine's Catholic Primary School		6	37.8	67%	16	34.8	81%
St Chad's Catholic Primary School		63	35.2	79%	71	35.6	93%
St Francis Catholic Primary School		46	33.7	78%	54	30.8	69%
St George's Catholic Primary School		24	33.0	75%	30	36.0	93%
St John's Church of England Primary School		25	34.5	76%	27	28.2	58%
St Joseph's Catholic Primary School		100	33.7	78%	120	36.8	94%
St Lawrence's Church of England Infant School		41	34.4	88%	60	36.4	90%
St Mary's Catholic Primary School		46	32.4	76%	60	32.7	80%
St Michaels Catholic Primary School		33	32.8	76%	40	35.0	79%
St Vincent's Catholic Primary School		30	28.9	67%	27	30.9	74%
St. Aldate's CoE Primary School		25	34.2	80%	31	34.6	83%
Summerhill Primary School		4	11.5	0%	10	33.3	90%
The Grove Primary School		10	28.4	60%	16	35.6	75%
The Holy Family Catholic Primary School		24	36.7	92%	30	24.8	47%
The Oaks Primary School		36	34.5	89%	43	34.8	88%
The Willows Primary School		23	36.1	91%	26	36.2	96%
Thornhill Primary School		20	33.4	85%	24	33.6	83%
Tithe Barn Primary School		21	34.8	86%	25	35.4	76%
Tower Hill Primary School		24	31.6	63%	31	35.9	90%
Trinity Church of England Infant School		65	33.5	80%	81	35.0	91%
Trinity Primary School		45	34.4	84%	60	34.1	82%
Turl Street Primary School		17	31.5	71%	29	29.4	67%
Uplands Primary School		28	36.4	86%	36	33.3	74%
Victoria Primary School		50	35.2	84%	60	34.9	88%
Wellfield Primary School		26	33.3	81%	30	34.8	83%
Westhead Primary School		53	34.3	77%	61	35.8	93%
Whitefield Primary School		39	34.5	79%	43	31.9	76%
Woodcote Primary School		24	35.8	88%	37	28.6	57%

# ALL SCHOOLS

## Phonics: 2017

### Autumn Birth

To include a school in a shorter list, click on its name then press

'Filter Schools'

To sort by a column click on the column heading

Filter Schools	Reset list	Y1 NOP	Y1 Mark	Y1 Result	Y2 NOP	Y2 Mark	Y2 Result
National			0.0	83%			93%
LA		539	33.9	79%	1257	35.0	87%
Abbey Primary School		9	35.4	89%	16	32.6	75%
Acorn Primary School		4	29.8	50%	14	32.4	79%
All Saints CofE Primary School		5	26.6	60%	14	33.5	85%
Alvanley Park Primary School		7	32.1	71%	13	35.5	85%
Balliol Primary School		8	35.5	88%	13	38.2	100%
Benwick Primary School		3	31.3	67%	9	36.7	89%
Bewley Drive Infant School		9	36.9	100%	14	31.9	71%
Bigdale Drive Infant School		11	34.5	82%	22	36.8	95%
Blackfriars Primary School		7	23.7	43%	10	37.0	90%
Brasenose Primary School		5	35.0	80%	10	34.4	90%
Brindley Primary School		2	34.0	100%	5	32.2	80%
Buckstone Primary School		3	31.7	67%	8	37.9	100%
Bullens Primary School		9	37.4	89%	20	34.9	94%
Carfax Primary School		8	35.1	88%	14	36.6	100%
Catte Street School		13	34.6	77%	25	35.3	88%
Cavendish Primary School		2	34.0	50%	9	35.6	89%
Cherryfield Primary School		7	35.1	86%	22	33.4	71%
Cophorne Primary School		4	31.0	50%	15	33.5	73%
County Road Primary School		1	40.0	100%	11	37.6	100%
Delaware Vale Infant School		6	32.8	67%	23	35.4	91%
Eastfield Primary School		9	36.7	100%	22	37.0	86%
Falcon Primary School		5	34.4	80%	16	36.0	88%
Forest Hill Primary School		7	32.4	71%	21	31.5	57%
Highfield Primary School		5	37.8	100%	8	35.0	71%
Holy Family Catholic Primary School		8	31.4	75%	16	36.8	88%
Holywell Primary School		6	36.3	83%	16	37.7	87%
Houlston Road Primary School		1	38.0	100%	8	36.0	88%
Iffley Road Primary School		4	24.8	50%	6	25.6	60%
James Holt Primary School		3	35.7	100%	10	32.4	80%
Jubilee Primary School		2	38.5	100%	13	33.6	83%
Kennelwood Primary School		5	35.0	80%	9	36.3	100%
Kingfisher Primary School		4	33.3	75%	3	38.0	100%
Ledsham Vale Primary School		11	26.6	55%	18	34.7	89%
Longwall Street Primary School		1	37.0	100%	4	34.3	75%
Magdalen Primary School		8	33.4	63%	11	35.0	91%
Marbury Road Primary School		11	38.2	91%	30	38.4	97%
Melverley Primary School		3	29.7	33%	6	31.2	67%
Mercer Primary School		5	31.6	80%	11	29.5	64%
Merton Primary School		9	32.0	67%	11	37.0	91%
Mill Lane Primary School		3	37.0	100%	6	38.3	100%
New College Lane Primary School		8	37.4	100%	17	34.4	81%
Northwood Primary School		10	33.1	70%	18	37.2	94%
Oatlands Road Primary School		6	37.5	100%	32	35.2	94%
Old Hall Primary School		11	36.7	91%	17	32.5	76%
Our Lady Immaculate Catholic Primary School		8	37.3	100%	26	35.7	92%



# ALL SCHOOLS

## Phonics: 2017

### Autumn Birth

To include a school in a shorter list, click on its name then press

'Filter Schools'

To sort by a column click on the column heading

Filter Schools	Reset list	Y1 NOP	Y1 Mark	Y1 Result	Y2 NOP	Y2 Mark	Y2 Result
Our Lady of Lourdes RC Infant School		13	33.5	85%	29	33.8	86%
Our Lady of Perpetual Succour Catholic Primary School		6	34.2	50%	17	34.8	94%
Peplow Road Primary School		11	33.8	82%	17	34.6	88%
Queen's Lane Primary School		3	39.3	100%	10	34.7	80%
Radcliffe Primary School		5	31.6	80%	6	38.0	100%
Richard Hesketh Primary School		11	34.2	91%	14	34.6	92%
Roughwood Primary School		7	34.2	71%	21	30.9	80%
Shevingtons Lane Primary School		9	27.7	67%	20	33.4	85%
Southdene Primary School		4	29.5	75%	7	31.6	71%
St Bartholomew's CofE Primary School		6	31.8	83%	15	32.9	80%
St Bede's Catholic Primary School		8	36.6	88%	19	36.5	95%
St Bernadette's Catholic Primary School		9	33.3	78%	15	36.4	93%
St Catherine's Catholic Primary School		3	36.5	67%	7	34.6	86%
St Chad's Catholic Primary School		11	34.6	73%	24	36.7	100%
St Francis Catholic Primary School		8	35.3	88%	12	31.2	75%
St George's Catholic Primary School		4	29.3	25%	11	36.4	100%
St John's Church of England Primary School		7	32.9	71%	8	26.9	43%
St Joseph's Catholic Primary School		21	35.6	90%	36	36.8	94%
St Lawrence's Church of England Infant School		10	34.7	90%	26	37.7	100%
St Mary's Catholic Primary School		7	34.3	86%	21	33.5	85%
St Michaels Catholic Primary School		7	35.4	86%	14	36.5	85%
St Vincent's Catholic Primary School		3	31.7	67%	12	33.0	83%
St. Aldate's CoE Primary School		1	36.0	100%	11	37.7	100%
Summerhill Primary School		1	0.0	0%	2	35.0	100%
The Grove Primary School		4	22.3	50%	9	35.9	78%
The Holy Family Catholic Primary School		4	32.5	75%	8	34.5	88%
The Oaks Primary School		5	38.2	100%	21	34.7	90%
The Willows Primary School		1	38.0	100%	8	38.1	100%
Thornhill Primary School		2	33.0	50%	7	36.0	86%
Tithe Barn Primary School		4	34.3	75%	12	35.9	75%
Tower Hill Primary School		4	27.0	50%	13	36.4	85%
Trinity Church of England Infant School		14	33.4	79%	29	35.7	93%
Trinity Primary School		8	32.1	75%	27	35.0	89%
Turl Street Primary School		4	34.5	75%	11	31.1	82%
Uplands Primary School		6	35.7	83%	12	35.0	82%
Victoria Primary School		11	35.8	82%	25	34.8	88%
Wellfield Primary School		3	30.3	67%	7	36.0	86%
Westhead Primary School		6	36.5	83%	19	38.2	100%
Whitefield Primary School		5	35.0	80%	12	33.7	91%
Woodcote Primary School		4	37.8	100%	16	33.9	80%