

Primary Schools Newsletter January 2020

Happy New Year!

Welcome to a new decade of music making. My fervent wish for this decade is that many more children find joy in making music and have access to opportunities to develop their skills and achieve their musical potential.

At Edsential Musical Routes we are stepping up our efforts to bring instrument tuition to schools, quality singing opportunities for children and young people and to support and train many more teachers and music tutors.

I am delighted to introduce new colleagues who will lead the way in these initiatives over the coming months. Alex Harper, Helen Chetwood, Catherine Singleton and James Bullock are Edsential's Music Area Leads who want to help teachers and schools develop music making. Please do contact us on music@edsential.co.uk with your questions/ enquiries/ comments and one of the Music Area Leads will get back to you.

Helen Chetwood is also leading our vocal strategy. Here are some of her new projects

'Bee Musical' KS1 Vocal Project

Bee Musical is a Key Stage 1 project that will give children the opportunity to learn entertaining and memorable songs from a musical all about the lives of bees! The children will have the opportunity to perform in front of their peers and alongside Edsential musicians.

The project will support children to develop good musical skills outlined in the National Curriculum, such as singing in unison, keeping a steady beat, listening skills and characterisation of songs.

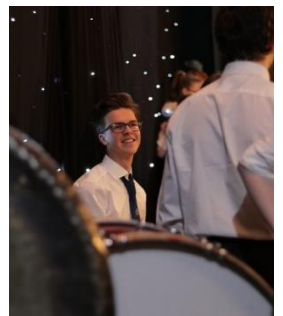
The project lends itself to cross-curricular opportunities through science and geography – exploration of the natural world and habitats, while addressing topical issues around climate change and how we can protect planet Earth.

Discover Singing with Dr Shirley Court 25th February 2- 4pm

The Singing Sherlock books for primary schools are many teachers' go-to resource. With helpful information for teachers about how to improve singing in the classroom and brilliant songs which are tried and tested in classrooms and concert performances.

We are delighted to welcome the co-author, Dr Shirley Court, to introduce the latest book in the series, Singing Sherlock 5 (for KS2 pupils). Shirley will focus on how to deliver good quality, fun and engaging singing in your school.

Singing can improve pupils' learning, confidence, health and social development. It has the power to change lives and build stronger communities. National Plan for Music, DFE.



Whitby Hall Lodge | Stanney Lane | Ellesmere Port | CH65 6QY

For further information about any of our services:

Visit: www.edsential.com | Email: hello@edsential.co.uk | Call: 0151 5412170

@EdsentialUK



'Help I'm a Music Co-ordinator!' - 12th February 2020

Cate Madden, Primary Music Adviser, explores coordinating the Music Curriculum and how to make it work effectively in your setting. Through practical activities investigating provision from EYFS and Key Stage 1 to Key Stage 2, including Whole Class Ensemble Teaching (First Access), we will consider ways for Music Coordinators in managing Music and to support their colleagues in planning, delivering and observing lessons, in addition to how to assess learning to ensure a progressive curriculum for your children. The aim is to end the day thinking, 'Hooray! I'm a Music Coordinator!'

School Music Celebrations

Please check the dates and venues [HERE](#)

Join us to celebrate the brilliant music that takes place in schools. Bring your own musical performance from a class or group and join in singing together. A wonderful feel-good celebration for all schools.

Subject Leader Network Meeting – Music (Primary and Secondary)

30th January 2020 2:30pm - 4:30pm at Williamson Art Gallery, Prenton, Wirral, CH43 4UE.

6th February 2020 2:30pm - 4:30pm at Tattenhall Outdoor Education Centre, High Street, Tattenhall, CH3 9PX.

In January / February, the PRIMARY Subject Leader Network Meetings will focus on exploring progression.

Come and Play with the Halle 2020 in the Bridgewater Hall Manchester

An Inspirational introduction to classical music, giving children the opportunity to join the Halle Orchestra.

Tuesday 30th June 2020 – Arrive: 12.30pm. Rehearsal: 1.00pm. Performance: 1.30pm

Thursday 2nd July 2020 – Arrive: 12.30pm. Rehearsal: 1.00pm. Performance: 1.30pm

Finally...

Edsential Musical Routes sends sincere congratulations to Dr Shirley Court who was awarded the British Empire Medal in the Queen's New Year's Honours List for services to children's singing in north west England. Many teachers in our area are grateful for the teacher training courses and choral projects that Shirley has led, not to forget the Singing Sherlock books. Great news, Shirley, and very well deserved. We look forward to working with you in 2020!



Whitby Hall Lodge | Stanney Lane | Ellesmere Port | CH65 6QY

For more information, please use the search facility on the Edsential Website.

For further information about any of our services:

Visit: www.edsential.com | Email: hello@edsential.co.uk | Call: 0151 5412170

@EdsentialUK

