

# IMPACT REPORT



2017 - 2018



IMPROVING OUTCOMES FOR  
CHILDREN AND YOUNG PEOPLE

# CONTENTS

3

FOREWORD.

4

COMMUNITY INTEREST COMPANY.

6

REAL LIVES. REAL PEOPLE.

6

MUSIC

7

RESIDENTIAL

8

SUPPORTING SCHOOLS

10

GOVERNANCE

11

HEALTH & WELLBEING

15

CLEANING

16

CREATIVE AND PERFORMING ARTS

18

CATERING

20

GROWTH AGENDA.

# FOREWORD

I invite you to read our second Impact Report. Here, at Edsential, we understand the power of learning and development for children and young people both in the classroom or, indeed, halfway up a mountain. We believe that learning opportunities should be both boundless and life-affirming.

Our objectives are clear and simple. We aim to have a measurable impact on the outcomes for the children and young people who have learnt and grown through their access to the services we provide.

We constantly improve and assess what we do to meet the unique needs of schools and pupils and continually quality assure our services by taking into account feedback from children, young people, staff, parents and carers.

We are very proud of the innovative services that we provide and I commend this Impact Report to you.

Jane Owens MBE  
Chair - Edsential



# COMMUNITY INTEREST COMPANY

Edsential is a Community Interest Company owned by Cheshire West and Chester Council and Wirral Council to provide services to the Education sector.

We have been created with a private sector head and public sector heart – allowing us the freedom to compete, whilst using any surplus as a direct reinvestment in our services or to support projects in our schools.

**This means we:**

- reinvest surplus funds into the education community, this year £50,000.
- support the Chairman's Trust Charity with service provision through staff time, website development, legal administration.

Currently, we are developing a corporate sponsorship team to assist in the fundraising for schools to enable us to develop a further funding stream for education.

Your support of Edsential allows us to continue to develop our offer and the support we provide to young people and the organisations that help them.

**Chairman's Trust**

The Chairman's Trust this year provided financial assistance to pupils in 126 Primary and Secondary schools across Cheshire West & Chester.

The Trust's purpose is to develop self-sufficient, resourceful young people by supporting learning outside the classroom.



**CASE STUDY: Sailability**

Tuesday 24<sup>th</sup> April 2018 saw 34 people attend our Sailability session at the Conway Centre, North Wales. Amongst the attendees were a group from Mencap Cymru. Mencap Cymru is the voice of learning disability in Wales.

The evening ran smoothly thanks to volunteers from Mencap, instructors from the Conway centre and clubs including Royal Anglesey and Llandudno Sailing Club.

All ages and abilities were welcomed, with the emphasis being placed on enjoying sailing together as one group.

*"This was the first of many sessions at the Conway Centre in conjunction with funding from the Outdoor Partnership. The group are looking forward to meeting new friends and introducing them to the freedom of the water."*

Royal Yachting Association Cymru Wales North Club Development Officer, Rosy Hearn said

*"We had people learning to sail in J80s, the Hawk and the Hansa. Others were able to enjoy the beautiful scenery by going for a trip in the motor launch. The evening was open to all ages and abilities; the youngest sailor on the water was only 7!"*

Royal Yachting Association Cymru Wales Chief Executive Officer, Phil Braden said

*"Despite the evening starting in the rain, this cleared leaving a beautiful still evening. Not the best wind conditions for sailing but still great to be out on the water!"*

Royal Yachting Association Cymru Wales would like to thank all the volunteers for their help and the Conway Centre for allowing us to hold the session at their venue.

**National Issues**

**The Attainment Gap**

Since its introduction in 2011, billions have been spent on the Pupil Premium, yet the national gaps remain stubbornly persistent. In 2012 it was noticed that the vast majority of schools set targets that are, to a greater or lesser extent, based on prior attainment.

The net result is that there is a built-in gap in the targets between those for disadvantaged children (who tend to have lower prior attainment) and those for other children. This is in large part responsible for the difficulty schools have faced in closing the gap.

One of our core aims is to improve outcomes for young people. In the near future we will be embarking on raising attainment for disadvantaged young people in conjunction with schools and local authorities.

See *Curriculum Support* (page 8) for more information on the work we've done.



*"Promoting physical and Mental Health in schools attainment and achievement that in turn improves their wellbeing, enabling children to thrive and achieve their full potential"*

PUBLIC HEALTH ENGLAND



**Mental Health & Wellbeing**

*"Outside of the home, school is often the most important consistent influence in children's development".*

THE GUARDIAN, 2018



One in ten children aged 5-16 have a clinically diagnosable mental health problem, yet 70% of young people with mental health problems never receive the correct interventions.

We pride ourselves on embedding mental health and wellbeing throughout our all services. For more information on the work we do see the *Mental Health and Emotional Wellbeing* section on page 13.



**70%** of young people with mental health problems **never received** the right interventions

**One in ten**  children aged 5-16 have a **clinically diagnosable** mental health problem

**Obesity**

Levels of severe obesity in children aged 10 to 11 years have reached the highest point since records began (Public Health England, 2018). The findings also show stark health inequalities continue to widen. The prevalence of excess weight, obesity and severe obesity are higher in the most deprived areas compared to the least deprived.

For more information on how we are supporting young people lead more healthy, active and happy lifestyles see our *PE, LOfC and Catering* sections.

# MUSIC

We encourage young people to explore their artistic and creative potential. Edsential's Music service has worked directly with over 257 schools in the last year enabling young people to open their minds and appreciate the power of creativity. There were over 25800 hours worth of instrumental tuition at our Music Centres in the last year.

We aspire to broaden horizons, support classroom learning and contribute to raising attainment. The Music Service has secured another two years of funding, helping us work towards these goals.

## Opportunities to Make Music in Special Venues

Through organising events in inspirational venues, we aim to raise aspirations, foster self worth, develop pride and create communities of young musicians and schools working in partnership

- Some venues we visited this year:
- The Bridgewater Hall
  - Boat museum
  - Chester Cathedral
  - Celtic gathering
  - New Brighton Pavilion
  - Barcelona



**2000** children played their instruments alongside the **Hallé Orchestra** in 2017 at the Bridgewater Hall in Manchester

## More Musical Curriculum for Children in Schools

- Offered funded places to recent, and newly, qualified teachers on our professional development courses.
- Worked in collaboration with Sky (Sefton and Knowsley) and Lancashire Music Education Hubs to introduce the 'Simply Singing' conference.
- Welcomed singing expert, Dr Shirley Court, to deliver four separate training sessions for teachers giving them the opportunity to develop quality singing within their schools.

## Special Educational Needs and Disabilities

Edsential produced the 'SENdsational Music' conference for practitioners working with Special Educational Needs young people across Cheshire. These events brought together some of the most inspiring organisations (Music Unlimited, Soundabout, Music and the Deaf, Bam Beats) with inspiring practitioners from schools to share their experiences, knowledge and achievements.

“As usual, the event was amazing, and all the children and staff thoroughly enjoyed the experience. Can't wait for next year!”

MUSIC CO-ORDINATOR

“It was so lovely to see so many aspiring children showcasing their talents. And, what a brilliant opportunity it was for them to interact with real life role models in such a fantastic venue...”

HEALTH AND SAFETY COMPLIANCE OFFICER, CHESHIRE WEST & CHESTER COUNCIL

“What a privilege it was to listen to the talented musicians this morning. Our students responded really well, and it enables them to participate in a concert whereas to go out to a concert would not be possible for many of them due to their anxiety issues.”

ASSISTANT HEADTEACHER, WIRRAL HOSPITAL SCHOOL



# RESIDENTIAL

## Conway Centres

Anglesey, Oaklands, Tattenhall, Beeston, Burwardsley and Delamere continue to offer a wide range of educational opportunities through outdoor activities, creative and performing arts and an increasing number of cross-curricular subjects.

We pride ourselves on being different. Our residential trips are developed to raise attainment for all ages in a variety of challenging locations to meet changing needs. We work closely with schools to build tailored experiences which match the needs of their young people.

We have, after more demand, increased the number and availability of courses relating to the creative and performing arts, meaning more students experienced a weekend working on GCSE and A-level courses in partnership with practising teachers from local schools and national artists.

## 2018-2019

Over the next year we will be working with other services within Edsential to develop new activities and programmes incorporating Physical Education, Health & Wellbeing and Music.



26,162 visitors from 639 schools used our 6 centres in 2017/18



“A memorable experience that was based on a true commitment to providing a quality programme that was safe and highly engaging. It was always a risk to change venue and approach but bringing our year six group in one go was certainly worthwhile! Our job is even more rewarding when we encounter like-minded professionals.”

HEADTEACHER ST GEORGE'S PRIMARY SCHOOL





# SUPPORTING SCHOOLS

## Data Services

The principal aim of the Data Service is to provide reports to schools much earlier than other systems and in a format that is easy to use and reflects what schools want to know.

Our service allows schools to gauge their latest results and teacher assessments against local and national benchmarks.

133 schools received pupil and school level data earlier than nationally released data, enabling them to provide intervention and support quicker, thus enabling them to intervene earlier; leading to improved outcomes for young people.

We have worked hard to tailor our Data Service to produce reports requested by schools, Governors, and Early Years Foundation Stage/Phonics practitioners.

We are launching an intervention for raising attainment for disadvantaged young people. The project developed by Dave Hollomby has been trialled successfully in Birmingham and Staffordshire and is being extended to Dorset, Hertfordshire and Central Bedfordshire.



A total of **112 schools** across Cheshire West, Chester & Wirral **subscribed for 2017-2018...** including **most** of Wirral's **infant schools** and **all** of its **junior schools**

*"Leaders are successfully narrowing the gap between the attainment of disadvantaged pupils and that of others. Leaders work with a representative from the local authority using a strategy called 'raising achievement of disadvantaged youngsters' (RADY)."*  
REF OFSTED SCHOOL REPORT.

## Early Years

We are now working with four EarlyYears professionals to further develop our Early Years offer. Workshops, training and in-house support have been delivered to parents, schools, nurseries and children through three Local Authorities.

Edsential is dedicated to developing a sustainable Early Years offer and ensure support is still available to children aged 0 - 5 years in all provision. The Early Years team are developing services with the Health & Wellbeing and SEND team to embed a whole school approach.

The impact of our Early Years music bid, being delivered in 26 schools and settings, will be seen in the next year. For further information please see the [Growth](#) section on page 20.

**21**  
childminders  
have undertaken  
training

**26 schools /**  
nurseries  
have undertaken  
training and insets

**1 school**  
has an  
ECCERS  
audit

## SEND

The SEND service continues to grow, now supporting 26 schools. We continue to provide the SENCo Award to an increasing number of students, enabling them to become fully qualified SENCos. This means more teachers are now experts in the field of SEND and are better prepared to support children and local schools.

To support practicing teachers we have developed our training to include building resilience, attachment and visual stress to support vulnerable children with their emotional health and wellbeing.

We also appreciate the importance of supporting parents and have therefore delivered training directly to both parents, foster carers and children.

### Our SEND Service Level Agreement:

- New training courses to support pupils with;
  - Attachment Issues.
  - Building Resilience in Vulnerable pupils.

### Parents Workshops include:

- Supporting your child with ADHD.
- Challenging behaviour.
- Maths.

*"I thought the training was excellent and perfectly pitched. Everyone who came enjoyed it and found it useful. I started with the jigsaw picture idea today and my boy with autism loved it!"*  
SENCOS CHESHIRE WEST SCHOOL

*"I loved Sue's anecdotal presentation style!"*  
SENCOS WHITBY HEATH PRIMARY

*"Invaluable information and preparation for inspection and providing knowledge of SEN in primary schools".*  
GOVERNOR: ST PETER'S RC PRIMARY

# GOVERNANCE

We remain dedicated to supporting schools in the provision of good school governance to ensure children receive the best education in a stable and thriving school environment.

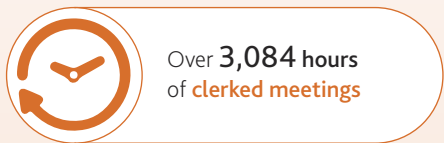
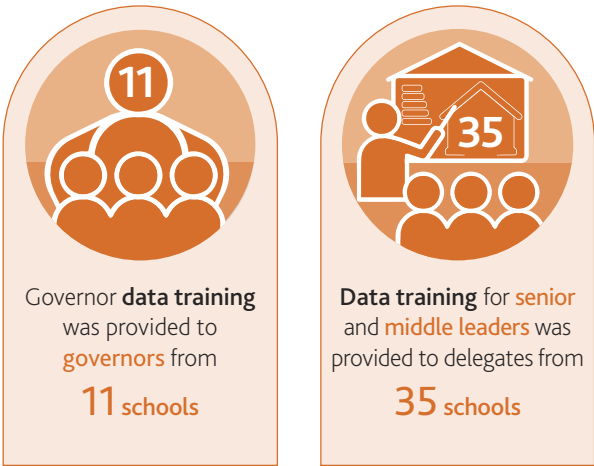
A Governing Board should have strength in depth, with different governors bringing different areas of expertise. Edsential Governor Support Packages can support your governors by providing a comprehensive and varied range of training, incorporating:

- Clerking
- Appeals
- Exclusion
- MATs
- Sub Committees

The service has now developed to support schools recruit and appoint outstanding Heads and Deputies.

As the Appropriate Body for CWAC we support Newly Qualified Teachers in becoming established and high performing teachers.

We have continued to provide excellent training to school governors across all areas of the curriculum and Governor standards, ensuring Governors have the skills and resources required to support schools to the best of their ability.



# HEALTH & WELLBEING

## PE, Sport, Physical Activity & Swimming

The PE, Sport and Physical Activity Team want to enthuse and inspire children and young people to develop a life-long love of physical activity. Their aim is to ensure every child has the knowledge, skills and motivation to equip them to feel good about themselves.

The Team has grown significantly over the past 12 months, both in terms of the number of staff working and the range of support and services provided to schools.

### Teachers

Through our 6-week Curriculum Support programme our team work with more than 200 class teachers, after which all of them said they feel more confident delivering the PE curriculum.

*"Very beneficial, lots of assistance and support in all areas of need. Fantastic support across the board with a host of ideas and options on how to teach a concept. Outstanding knowledge and practise from the tutor."*

### Subject Leaders

47 PE subject leaders have received support and guidance to help meet statutory guidance in relation to the PE and Sport Premium, Learning Walks and monitoring, action plan writing and evaluating current provision helping to raise the standards of PE young people receive.

### Parents

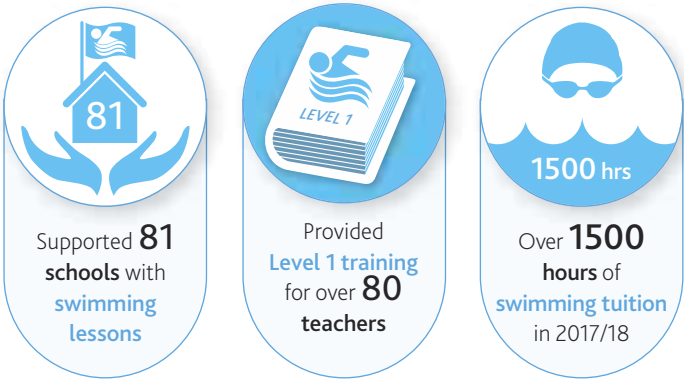
Our Family Activity and Family After School Clubs have engaged more than 200+ parents and their children in regular physical activity. After which 100% of parents felt they were more active as a family and more confident to support their children in becoming active on a regular basis. 100% rated the quality of the programme as very good (13%) or excellent (87%).

*"It has helped me to keep trying even if I don't want to".*  
*"Felt more confident in PE with others, usually enjoy playing on my own".*  
*"It was amazing! Felt happy and better at PE - enjoyed sports we did".*  
*"Gave me more confidence- realised I am good at Athletics".*  
*"Feel more confident and feel I can do it and achieve".*

### Pupils

Our team have worked with more than 3,600 young people over the past 12 months. including the provision of breakfast and after school clubs.

### Swimming



69% of our pupils leave primary school as competent swimmers (compared to 50% nationally)



Learning Outside the Classroom

The LOTC team facilitates the Evolve approvals process, training of teachers and direct delivery to children. Through these processes the team enables learning to take place in all environments not just the classroom.

Children identified as having the following learning barriers	What we did	The impact it had
<ul style="list-style-type: none"><li>Disengaged</li><li>Low self-esteem</li><li>Low self-worth</li><li>Lack of confidence</li><li>Struggling to do things that were perceived as difficult</li><li>Low resilience</li></ul>	<p>Intensive forest schools programme focussing on direct teaching:</p> <ul style="list-style-type: none"><li>Building confidence</li><li>Taking risks</li><li>Developing trust</li></ul>	<ul style="list-style-type: none"><li>A willingness to try new things</li><li>Developed their relationships</li><li>Increased self-esteem and self-worth</li><li>Development of trust of self and school staff</li><li>Enjoyment and engagement and working effectively in a group</li></ul>



Edsential Learning Outside the Classroom team currently support **597 schools** across **4 Local Authorities** to deliver well planned **residential** and **adventurous activities**



**613,521** Learning Outside the Classroom days



We have trained **116 Educational Visit co-ordinators** to support schools with their internal processes of **managing educational visits**

We supported 35 schools in developing their LOTC opportunities for young people, through: family engagement, forest school programmes and curriculum support.

*"Thank you so much for last night's staff meeting. The staff were so inspired, and we are excited for our whole school summer topic. We will make sure you get an invite!"*

HEAD TEACHER

*"I really enjoyed splitting the wood. I had to use a knife. I've never been trusted to do that before."*

CHILD FROM ROCK FERRY PRIMARY

The beginning of 2018 saw the launch of EVOLVE Plus. This package reduces the administrative pressure and expense of visits by providing eConsent, eMedical forms and messaging service that directly links to the schools MIS system and EVOLVE. This system reduces the administrative pressure and expense of visits thus enabling more children to participate in Learning Outside the Classroom activities more easily.

Mental Health and Emotional Wellbeing

We are committed and passionate about ensuring our professional development training and support is planned with nationally acclaimed experts, to ensure the services we provide have a real and genuine impact. These links enable us to effectively support schools, focussing on innovative, evidence-based strategies and solutions.

Our Service; Making Life Easier for Schools



We are proud to be working in partnership with the Carnegie School of Education at Leeds Beckett University. Leeds Beckett have established the first Masters' degree for Mental Health and a Mental Health Award for Primary and Secondary schools.

*"I have such a deeper understanding of the role of Leading Mental Health and Emotional Wellbeing in my school"*

*"The information on action planning was excellent "*

*"It is so useful to share practice and what is working in other schools"*

*"It helped to know more about the usefulness of about measuring impact/data"*

*"Clear templates and resources for support"*

*"An outstanding delivery "*

*"Totally inspirational session, I feel so motivated"*

Healthy Minds - Resilience and Results



The aims of the programme are to develop children's emotional health and support when faced with a learning or social stressor.

*The programme was planned to offer a range of effective Diagnostics, Coping Skills and Prevention and was tailored to each child/group of children /whole class.*

Some of the outcomes of this programme

- Using a non-formal approach to identify positive and negative emotions
- Coping strategies to deal effectively with mixed emotions
- Developing Resilience and Confidence to adapt to new situations
- Developing and Maintaining a positive mental attitude when faced with challenging situations
- Developing a Growth Mindset to allow children to take on new challenges

**Feedback from participants...**

*"Thank you. When my feelings are huge, and hard, I don't know why nobody understands... but you have helped me"*

PUPIL AGED 10

*"I can help me and my mum... I loved the part on what you do if you feel always bad or stressed and help yourself and a friend"*

PUPIL AGED 8

Every one of our 30 training courses from September 2017 aimed at leaders, staff and parents in Mental Health and Emotional Wellbeing have been graded at 96% 'Excellent' and 4% 'Very good'.

### Duke of Edinburgh's Award

Edsential holds the licence for DofE approvals due to its outstanding record of achievement in this area.

13% increase in 'Awards Started' and 'Awards Completed' during 2017-2018.

New DofE accredited centres: The Neuromuscular Centre, Winsford and Petty Pool. Helsby High School have recently enrolled over 50 students on the Award and are also offering the Silver and Gold Award.

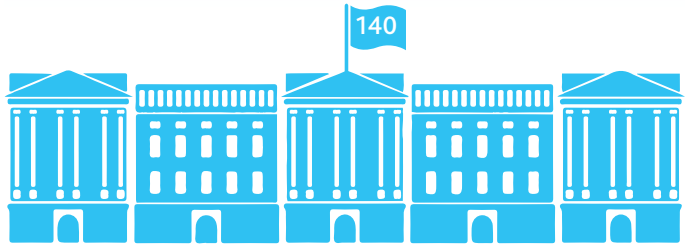
The self-development nature of DofE fits perfectly with an alternative curriculum or education programme and 16% of the students this year, participate from Special Schools, NMC Winsford, Petty Pool, LIVE and CIL all starting to engage their students in the DofE Award.



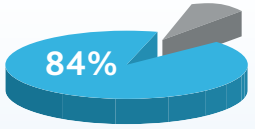
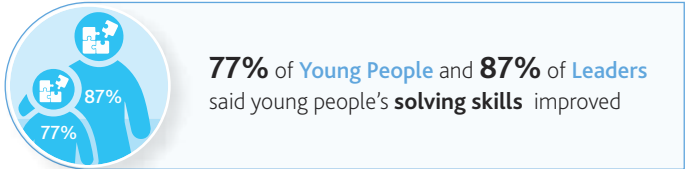
Provider	Bronze	Silver	Gold	Total
Edsential	1296	305	271	1872
Cumbria	1211	294	134	1639
Kirklees	920	160	177	1257
Awards Completed	Bronze	Silver	Gold	Total
Edsential	681	234	140	1055
Sheffield Futures	627	97	61	785
Kirklees MBC	520	115	145	780

*'The experiences gained through completing a DofE programme provided me with plenty of discussion points at interviews and examples of situations where I have demonstrated skills such as leadership, team building, commitment, perseverance and organisational skills.'*

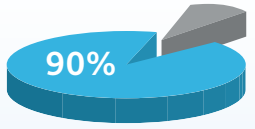
JAMES CUNDILL, BISHOP HEBER GOLD PARTICIPANT



140 Gold Award recipients from Edsential have been invited to receive their Awards from venues including Buckingham Palace



84% of Young People felt that they had become a **better person**



90% of Young People said that doing their DofE had given them opportunities to **help others**

## CLEANING

All activities introduced this year have supported improved cleaning standards which supports Edsential's vision of improving outcomes for all young people in education, employees within the workplace and vulnerable groups within care environments.

Positive feedback from customers has shown the successful impact of these changes on cleaning standards.

- New operational team
- Cleaning Audits completed within the contract year.
- New customer surveys
- New Operations Manuals.

Our Team Leaders have all successfully completed their IOSH Managing Safely Certificates and NVQ Level 3 in Cleaning Supervision.

We have widely improved our Health & Safety provision across the service area so that less accidents are reported. We aim to improve learning environments for all staff and pupils.

To highlight and acknowledge the great work our staff do, we have introduced a Star of the Month award.

We are an ethical employer, ensuring our staff receive safeguarding training and are we are pleased to be a registered Local Living Wage provider.



Every day Edsential Cleaning Teams clean a combined area of **82,357 m²**

67% of customers surveyed indicated that cleaning staff demonstrate **good customer care**



Number of reported **workplace accidents** within the cleaning team has **reduced from 12 to 7**

17 members of the cleaning team have received a **Star of the Month Award**



152 members of the cleaning team attended the **Cleaning Services Training** days during the summer break

210 **Cleaning Audits** were completed by the Team Leaders – average score is **83%**



**£50,749** spent on **new cleaning equipment and repairs**



# CREATIVE AND PERFORMING ARTS

Edsential believes access to a wide and varied curriculum should be the right of all children. Creative and performing arts champions pupils' development, provides life satisfaction and engagement, leads to more positive academic attainment and personal wellbeing. We continue to increase the range of creative performing arts courses that are run in conjunction with our residential service and have also grown our in-school artistic support service. We provided comprehensive arts festivals and exhibitions to help raise pupil aspiration.

The delivery of arts attainment courses at Conway Centres: Anglesey has directly contributed towards exam success and INSET for teachers.

15

15 schools and 405 pupils took part in Arts Education in a Multi-Cultural Society – 3 new schools

405

Illustration of a school building and a crowd of people.

Arts Festival

Over 700 pupils performed in the Without the Walls Arts Festival in July 2017 in Chester

4080

Illustration of an easel, palette, and masks.

4,080 Arts sessions attributed to raising attainment at GCSE and A Level – includes Drama and Dance

12

Illustration of a house with a palette and a flag that says 'NEW'.

12 new schools for GCSE Art and 4 new weekends

£5k

Edsential secured £5,000-a-year from the Edridge Trust, for the next 3 years, to fund disadvantaged students to travel to Tuscany

608

Illustration of five stylized human figures.

An increase from 608 pupils participating in 2016/2017 to 816 in 2017/2018 – raising attainment



Isabella Maria Grazia Cecere (The Catholic High School, Chester)

Case Study

To support their A level studies. Young Artists in Tuscany: Supporting gifted and talented A2 arts students.

“The Young Artists in Tuscany course was without a doubt the most life changing education excursion I have ever undertaken. The trip not only developed my artistic ability, skills and creative mind for future application at college and university but also gave me key skills in how to be myself in a group of highly educated and skilled individuals.

As an applicant to Cambridge University, I have been very worried about what it would be like trying to be a student from a low-income background and below average school, in the midst of high achievers from obviously more advantaged backgrounds.

However, I was able to be myself and also be one of the most hardworking and dedicated without compromise, and I made a lot of new friends. This is big for me, and although it could sound silly, the young artists in Tuscany trip has matured me in ways no other trip could.”

BURSARY STUDENT

# CATERING

We believe that enjoying food and eating sociably is a valuable part of understanding and developing a healthy lifestyle. This alone plays a vital role in children and young people's development.

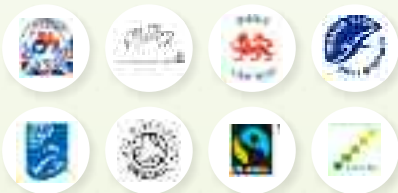
A **"Build Your Own Menu"** option, has allowed schools the freedom and scope to have a vast increase in menu options.

This element of choice empowers students to become 'new menu' ambassadors, nurturing a whole school culture around healthy eating. With this ethos, a schools catering provision can create a host of key influencers within the school:

- Students
- Staff
- Parents
- Governors

However we understand that children need to appreciate and have access to good food outside of school, so we have developed family cooking schools to support parents providing balanced nutrition.

We are the only supplier to offer:



33

"If you were to tell me 12 years ago that I would still be working as a 'Dinner lady' in 12 years' time I would never have believed you, it's a testimony to Edsential and school dinners that I am."

RHONA CURTIS, HIGHER BEBINGTON JUNIOR SCHOOL

"The children really enjoy helping to create our three-week menus. The food is delicious and well-presented, and I am always proud to welcome guests to our family lunch events."

WESTMINSTER PRIMARY SCHOOL

"We moved to ParentPay in Summer 2017. The Classroom Selection is brilliant. The teachers log on in the morning and on the touch screen in the classroom the children click on their name and make their selection."

The online payments with ParentPay means we are virtually cashless. Parents log onto their account and make payments for school lunches, trips and breakfast and after school club and see their balance any time. Our breakfast and after school club register is online and it is so easy to send payment reminder emails out."

EATON PRIMARY SCHOOL

33



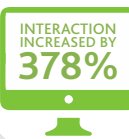
During our **second year** we served on average **28,000 meals per day** or **5,320,000 meals per year**  
A 12% increase to meals per day on 2016/17



**Nature to Nurture video**  
**5,000** online views  
To view, **scan** the QR Code or **click** here



**Annual Roast Dinner day** in conjunction with **Food for Life** and **National School Meals Week**, saw 148 entries with **Tilston Parochial CE Primary** winning



**5 online competitions** for staff, showcasing their **culinary skills** - **increased** both **staff, parent** and **school** interaction by **378%**

**34 primary schools** have signed a **3-year contract** enabling them to benefit from

**FREE MEAL SELECTION & ParentPay**



**254** catering staff **passed** **FOOD SAFETY Level 2**



## Family Cooking

The sessions also incorporate

Mathematics
Cooking provides opportunities to learn mathematical vocabulary
Gain experience in counting and recognising numbers
2D shapes through the use of different cutters
Learn about timing
Physical skills
Tasks such as holding a spoon, mixing, beating, shaking, pouring, rolling or cutting which develop fine motor skills
Smelling and feeling the ingredients will help to improve use of senses
Emotional and social skills
Food is a great vehicle for communication. Children learn to share and how to take turns, particularly if they make something with a friend or sibling

33

"I am now eating food that I thought I didn't like"

"I can now make perfect pancakes"

"I learnt to cook and work together"

FEEDBACK FROM CHILDREN

"It's easier cook healthier food than I thought"

"It's just as quick to make food from scratch"

"We really enjoyed our time together and will really miss the cooking course"

FEEDBACK FROM PARENTS

33

# GROWTH AGENDA

## CATERING

- Reduce sugar in biscuits and desserts
- Continue to increase meal up-take in schools
- Increase the number of family cooking schools
- Retain the Food for Life Award

## CLEANING

- To expand the service in the Wirral
- To continue to improve customer feedback
- To continue to drive improvements to quality

## HEALTH & WELLBEING

- Increase the number of KS2 children who can swim
- Increase the number of children learning outside the classroom
- Further develop the mental health award in schools
- Support schools in reducing obesity and improving wellbeing

## GOVERNORS

- To increase the number of clerks
- To develop Governor resources online

## RESIDENTIAL

- Increase the number of pupils experiencing educational residential visits
- Increase the variety of residential experiences
- Improve the facilities for visiting schools

## CREATIVE & PERFORMING ARTS

- Successfully launch a cultural offer
- Increase the number and types of residential courses

## CURRICULUM SERVICES

- To grow the SEND team to meet demand
- Launch the RADY project
- Deliver conferences on behalf of schools

## MUSIC

- Increase participation in music making
- Develop the Early Years music offer
- Develop the cultural offer







*For further information about  
any of the services in this brochure:*

Visit: [www.edsential.com](http://www.edsential.com)

Email: [hello@edsential.co.uk](mailto:hello@edsential.co.uk)

Call: 0151 541 2170

@EdsentialUK

